



# Synaptotagmin X Polyclonal Antibody

<b>Catalog No</b>	YP-Ab-00743
<b>Isotype</b>	IgG
<b>Reactivity</b>	Human;Mouse;Rat
<b>Applications</b>	WB;IHC
<b>Gene Name</b>	SYT10
<b>Protein Name</b>	Synaptotagmin-10
<b>Immunogen</b>	Synthesized peptide derived from Synaptotagmin X . at AA range: 380-460
<b>Specificity</b>	Synaptotagmin X Polyclonal Antibody detects endogenous levels of Synaptotagmin X protein.
<b>Formulation</b>	Liquid in PBS containing 50% glycerol, 0.5% BSA and 0.02% sodium azide.
<b>Source</b>	Polyclonal, Rabbit,IgG
<b>Purification</b>	The antibody was affinity-purified from rabbit antiserum by affinity-chromatography using epitope-specific immunogen.
<b>Dilution</b>	WB 1:500-2000;IHC-p 1:50-300
<b>Concentration</b>	1 mg/ml
<b>Purity</b>	≥90%
<b>Storage Stability</b>	-20°C/1 year
<b>Synonyms</b>	SYT10; Synaptotagmin-10; Synaptotagmin X; SytX
<b>Observed Band</b>	55kD
<b>Cell Pathway</b>	Cytoplasmic vesicle, secretory vesicle membrane ; Single-pass membrane protein . Localizes to neuronal vesicles containing IGF1 that are not enriched at synapses. Does not colocalize with synaptic vesicles or with the Golgi apparatus. .
<b>Tissue Specificity</b>	Expressed only in pancreas, lung and kidney.
<b>Function</b>	cofactor: Binds 3 calcium ions per subunit. The ions are bound to the C2 domains.,function: May be involved in Ca(2+)-dependent exocytosis of secretory vesicles through Ca(2+) and phospholipid binding to the C2 domain or may serve as Ca(2+) sensors in the process of vesicular trafficking and exocytosis.,similarity: Belongs to the synaptotagmin family.,similarity: Contains 2 C2 domains.,subunit: Homodimer. Can also form heterodimers.,tissue specificity: Expressed only in pancreas, lung and kidney.,
<b>Background</b>	cofactor: Binds 3 calcium ions per subunit. The ions are bound to the C2 domains.,function: May be involved in Ca(2+)-dependent exocytosis of secretory vesicles through Ca(2+) and phospholipid binding to the C2 domain or may serve as Ca(2+) sensors in the process of vesicular trafficking and exocytosis.,similarity: Belongs to the synaptotagmin family.,similarity: Contains 2 C2 domains.,subunit: Homodimer. Can also form heterodimers.,tissue specificity: Expressed only in pancreas, lung and kidney.,



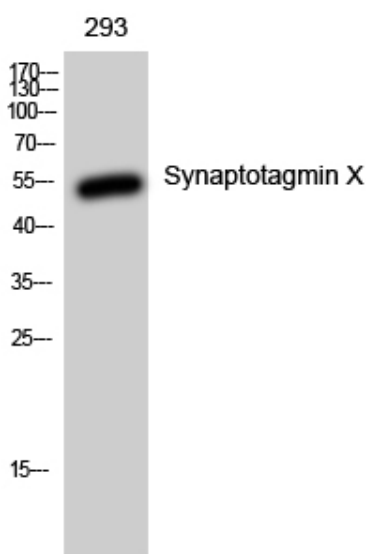
**matters needing attention**

Avoid repeated freezing and thawing!

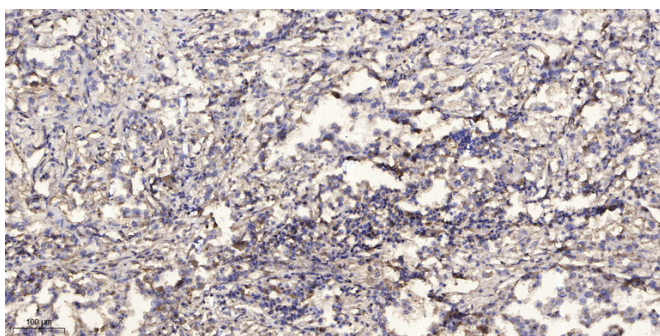
**Usage suggestions**

This product can be used in immunological reaction related experiments. For more information, please consult technical personnel.

## Products Images



Western Blot analysis of 293 cells using Synaptotagmin X Polyclonal Antibody



Immunohistochemical analysis of paraffin-embedded human Squamous cell carcinoma of lung. 1, Antibody was diluted at 1:200(4° overnight). 2, Tris-EDTA,pH9.0 was used for antigen retrieval. 3,Secondary antibody was diluted at 1:200(room temperature, 45min).